

# Indian Creek Station Station Rehabilitation

---

- **AXIS Infrastructure LLC**  
Designer
- **Carroll Daniel/ Moody JV**  
Construction Manager At Risk
- **MARTA**  
Capital Programs Expansion and Innovation

*Status Update – January 10, 2024*  
*Romon Moultrie, Project Manager, CPEI*



# Indian Creek Station

## Facts:

- Location: Stone Mountain, Ga (DeKalb County)
- Service Date: June 26, 1993
- MARTA Police Precinct
- End of Line Station- Blue Line
- Current Bus Routes:
  - 24
  - 107
  - 111
  - 116
  - 119
  - Ride Gwinnett 70 (new)



# Indian Creek Station Rehabilitation

## The Vision:

- To assist with this vision of Station Rehabilitation and other forthcoming Capital Projects, MARTA decided to add another delivery method to its Capital Programs. New to MARTA, but a consistent method in the construction industry- Construction Manager At Risk (CMAR).
- The CMAR will allow for MARTA to execute capital projects more effectively and efficiently. This allows MARTA to progressively design and start the building process once milestones are executed. This removes the years of design then build.



# Indian Creek Station Rehabilitation Vision





# Indian Creek Station Rehabilitation

## Purpose:

- Execute necessary repairs to aging infrastructure.
- Providing patrons with a new and refreshed customer experience.
- Improve accessibility for surrounding communities.
- Completion in 2025

## Phases:

- Station
- TPSS/ PP
- Parking Lot Paving
- Pedestrian Bridge



# Indian Creek Station Rehabilitation

## Scope of Work: Station

- Remove and replace all existing concert within the bus Loop, concourse, and platform.
- Resurface the existing blue blocking with High Pressure Laminate (HPL) Panels.
- Update and increase the lighting fixtures.
- Remove and upgrade the existing windscreens.
- Revitalize existing artwork and install additional pieces.
- Remove and update existing wayfinding signage.
- Install Smart Restrooms.
- Remove and upgrade the Rail Supervisors Booth on the platform.
- Install a new Rail Operators Restroom on the platform.
- Install new escalator.
- Revitalize benches on the platform and bus loop.
- Pressure washing.



# Indian Creek Station Rehabilitation

Scope of Work: Station (continued)





# Indian Creek Station Rehabilitation

## Scope of Work: TPSS and PP

- Resurface the existing blue blocking with High Pressure Laminate (HPL) Panels.
- Update exterior lighting fixtures.
- New roofs.
- Updated landscaping to protect buildings.
- Revitalize PP existing blocking.
- Paint doors, handrails, and window seals.
- Upgrade HVAC and emergency ladder in PP Tower.
- Revitalize signage.



# Indian Creek Station Rehabilitation

## Scope of Work: Parking Lot Paving

- Remove and replace asphalt- Full Depth Replacement.
- Upgrade lighting fixture heads
- Resize all parking space to accommodate full size vehicles.
- Remove and replace concrete within the plaza area with designs.
- Remove and upgrade lighting fixtures within the plaza.
- Remove and upgrade the existing windscreens.
- Revitalize existing artwork and install additional pieces.
- Remove and update existing wayfinding signage.



# Indian Creek Station Rehabilitation

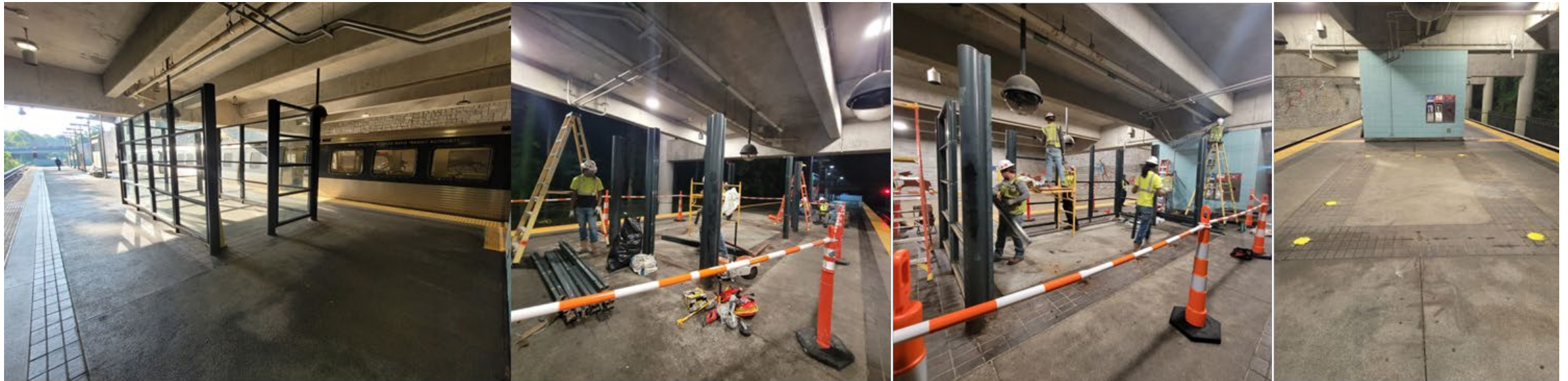
## Scope of Work: Pedestrian Bridge

- Clearing existing vegetation on the northside of the station.
- Grade cleared area to have a 0-3% slope, will assist with ADA need patrons.
- Bridge/ walkway will have security cameras and lighting.
- New artwork to be intergraded into bridge.
- Bridge entrances to be landscaped.





# Indian Creek Station Rehabilitation Progress





# Indian Creek Station Rehabilitation Progress



# Indian Creek Station Rehabilitation Progress





# Indian Creek Station Rehabilitation Progress

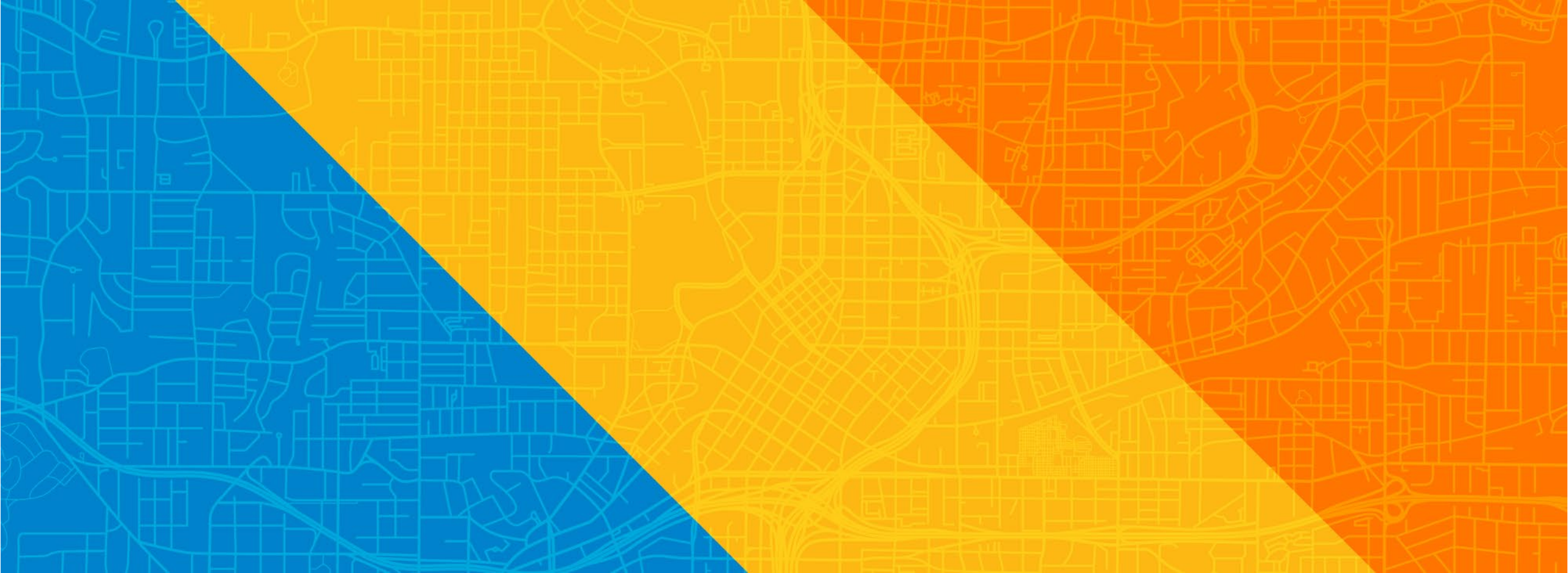


# Indian Creek Station Rehabilitation Progress









Thank You

